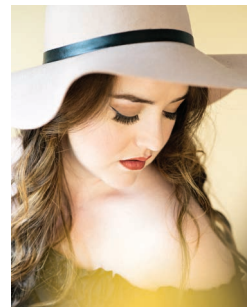




# CAROLINE M. HOLT



## FILM

Screamer	Lead Role	Inception to Projection
For a Mother	Lead Role	UALR Student Film
Mono No Aware	Lead Role	UCA Grad Student Film
Consequences	Lead Role	Faded Pictures Films
Killscreen	Lead Role	Faded Pictures Films
Come Early Morning	Featured Extra	Feature Film (IDP Dist.)

## PROFESSIONAL/COMMUNITY THEATER

Hairspray	Penny Pingleton	The Public Theater
HAIR	Jeanie	The Weekend Theater
Ragtime	Evelyn Nesbit	The Weekend Theater
Nunsense	Sister Mary Leo	The Community Theater
Music Man	Gracie Shinn	Ark Rep + Ark Symphony
Children of a Lesser God	Lydia	Arkansas Repertory Theater
A Christmas Carol	Ensemble	Arkansas Repertory Theater
Cinderella	Ensemble	Arkansas Repertory Theater
Annie	Ensemble	Arkansas Repertory Theater
Sound of Music	Ensemble	Arkansas Repertory Theater
RENT	Ensemble	The Weekend Theater
Charlie and the Chocolate Factory	Ensemble	The Arkansas Arts Center
Joseph and the Amazing Technicolor Dreamcoat	Ensemble	Arkansas Repertory Theater

## COMMERCIAL

Professional On-Screen Talent	Program host ; 2004-2009	Marketing Solutions
Professional Voice-Over Talent	250+ spots ; 1997-present	See Spot Run, Small Pond, The Works, ARCA...

## ACTING AWARDS:

International Models and Talent Association 2007  
Actress of the Year - Top 10  
2nd Place - Sitcom  
3rd Place - Soap

## ON-SET PHOTOGRAPHER:

Fixer to Fabulous      HGTV  
Cold Soldiers      Clandestine Films